



GENERAL DETAILS

- Rack dimensions: **50x50 cm**
- Total weight: 140 Kg
- Washing cycles / racks/hour:
60"- 120"-180"-9'/60-30-20-7
- Possibility of automatic start of washing cycle by closing the hood
- Upper and lower rotating wash/rinse arms with stainless steel tube
- Wash pump: 1000 W
- Boiler capacity: 8 lt
- Tank capacity: 30 lt
- Boiler heating elements: 6,0 kW
- Tank heating elements: 2,8 kW
- Water quantity per cycle: 2.5 lt
- Electronic controls with LCD display
- Useful washing height: 415 mm
- Magnetic hood microswitch
- Automatic filling of water
- Double electric detergent and rinse aid dispenser
- Hot rinse
- Thermostop function
- Vertical self-cleaning washing pump
- Anti-Backflow system on the hydraulic circuit included
- Green function for energy saving
- Self-cleaning cycle at the end of the day
-

WATER FILTRATION

- Pre-filtering of tank water by means of no. 1 stainless steel filter
- Single wash pump filter, easily removable

BODY

- AISI 304 stainless steel body
- Single skin hood
- Preformed wash tank with rounded corners
- Hood opening system with springs
- Removable upper and lower wash/rinse arms for easy cleaning
- Boiler in AISI 304 stainless steel

EQUIPMENT

- 2 racks 50x50 cm, 12/18 plates
- 1 glass rack 50x50 cm
- 2 cutlery baskets
- 1 inlet hose (2 m lenght)
- 1 drain hose (2,5 m lenght)
-

OPTIONALS

- Drain pump
- Hot water filling
- Double skinned hood
- HD Version (Total power 12,8 kW, 380-415V3N~/220-240V3 ~ 50 Hz only 60 Hz version)
- Kit booster pump
- Kit remote control system

ACCESSORIES FOR WATER TREATMENT

- Integrated water softener unit ("S" model)

ACCESSORIES

- Entry / exit tables in stainless steel
- Pre-wash tables in stainless steel
- Special baskets

INSTALLATION

- Use the screws of the feet and a spirit level to ensure that the machine is levelled

MAIN POWER SUPPLY

- The voltage of main power supply must be compatible with the rated voltage
- The machine must be connected to a suitable earth (ground) system
- Connect the machine power socket to the multi-pole wall switch provided

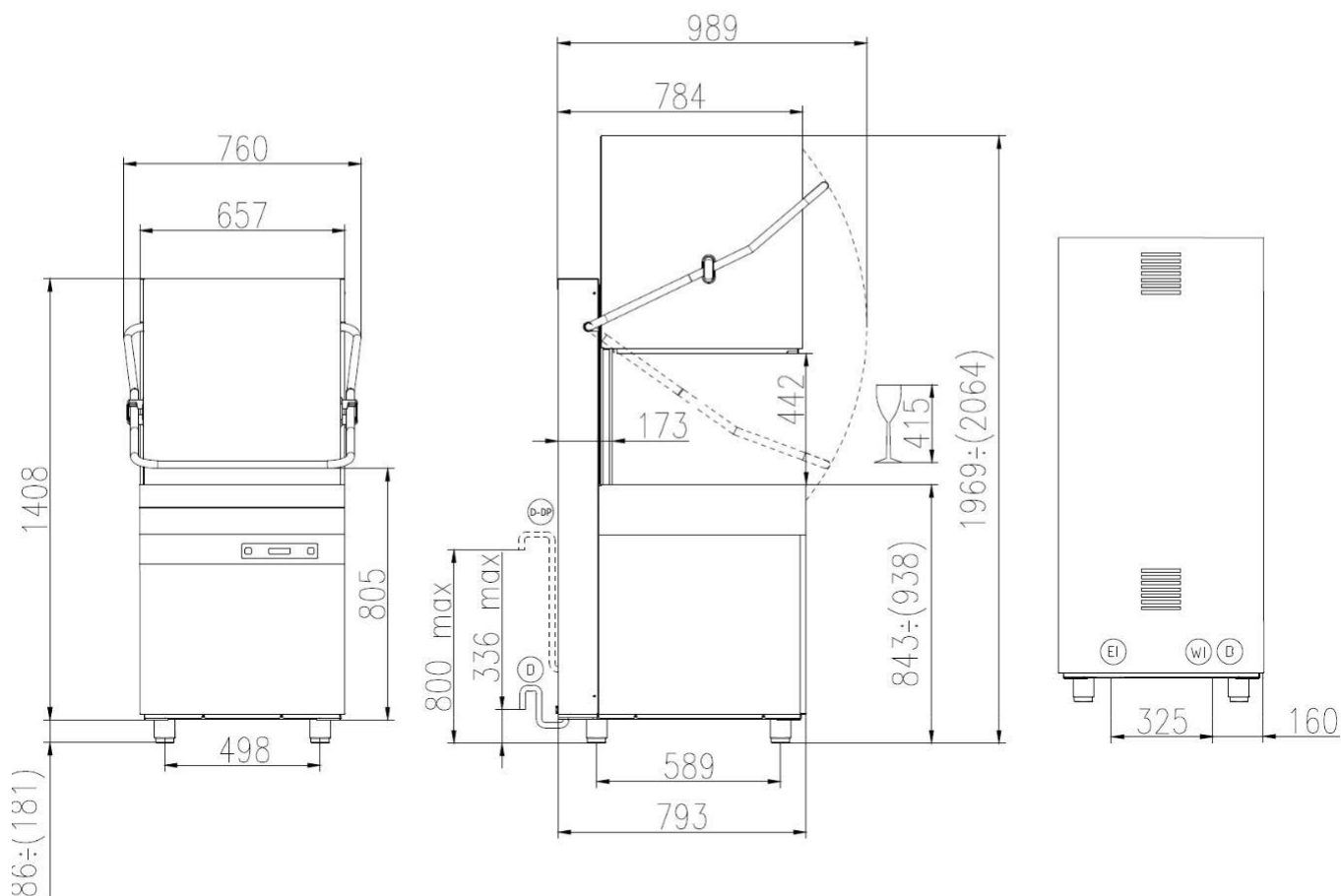
WATER SUPPLY CONNECTION

- A water softener must be installed if the water is hard
- The water pressure must be between 0.2MPa (2 bar), and, 0.5MPa (5 bar)
- The temperature of the water-supply must be between 10°C to 50° C

TECHNICAL SPECIFICATIONS

- Voltage: **380-415V3N / 220-240V3 /220-240V~ 50 Hz**
- Total power: **7,0 Kw**
- Amperage: **18 A / 27 A/ 31 A**
- Power cord supply size :**5x2,5 / 3x4 mmq**

HK 1200E



EI CAVO DI ALIMENTAZIONE
POWER CORD SUPPLY
CABLE D'ALIMENTATION
CABLE DE ALIMENTACION

WI CANNA DI CARICO G 3/4" L=2000 mm
G 3/4" INLET HOSE L=2000 mm
TUYAU D'ALIMENTATION G 3/4" L=2000 mm
TUBO DE ALIMENTACION G 3/4" L=2000 mm

D TUBO DI SCARICO ø 40 mm L=2000 mm
DRAIN HOSE ø 40 mm L=2000 mm
TUYAU DE VIDANGE ø 40 mm L=2000 mm
TUBO DE DESAGUE ø 40 mm L=2000 mm

D-DP TUBO DI SCARICO ø 29 mm L=2500 mm (CON POMPA SCARICO)
DRAIN HOSE ø 29 mm L=2500 mm (WITH DRAIN PUMP)
TUYAU DE VIDANGE ø 29 mm L=2500 mm (AVEC POMPE DE VIDANGE)
TUBO DE DESAGUE ø 29 mm L=2500 mm (CON POMPA DE DESAGUE)

	Min 10°C-MAX 50°C
	Min 10°C-MAX 25°C with ENERGY RECOVERY
	200÷500kPa(2÷5 Bar)
	100÷500kPa(1÷5 Bar) with ATMOSPHERIC BOILER
	HARDNESS 5÷20T-2.8÷11Td